

Muskuloskeletální MR protokoly

1,5 Tesla

ÚVN Praha

T. Belšan

J. Ráček

O. Krahula

GE Discovery 450

Hlezo 1.5T

- Coil Quad ankle

Protokol:

- Ax T2 FS
- Sag T2 FS
- Sag PD
- Cor PD



Typ	Ax T2 FatSat
Sekvence	FRFSE-XL
Rovina	Ax
Vrstva mm	4
FoV mm	18
Matrix Ph x Fr	256 x 512
Freq. Direction	R-L
PAT	-
TR ms / Slices	5260 /20
TE ms	85
ETL	17
NEX	2
Čas	2:54
Různé	NPW, TRF



1352 mm

Typ	Sag T2 FatSat
Sekvence	FRFSE-XL
Rovina	Sag
Vrstva mm	3
FoV mm	19
Matrix Ph x Fr	256 x 512
Freq. Direction	S-I
PAT	-
TR ms / Slices	5720/22
TE ms	85
ETL	17
NEX	2
Čas	3:09
Různé	NPW, TRF



Typ	Sag PD
Sekvence	FRFSE-XL
Rovina	Sag
Vrstva mm	3
FoV mm	19
Matrix Ph x Fr	256 x 512
Freq. Direction	S-I
PAT	-
TR ms / Slices	2500/22
TE ms	30
ETL	8
NEX	2
Čas	2:55
Různé	NPW, TRF



Typ	Cor PD
Sekvence	FRFSE-XL
Rovina	Cor
Vrstva mm	3
FoV mm	19
Matrix Ph x Fr	256 x 512
Freq. Direction	S-I
PAT	-
TR ms / Slices	2500/26
TE ms	30
ETL	8
NEX	2
Čas	2:55
Různé	NPW, TRF



Koleno 1.5T

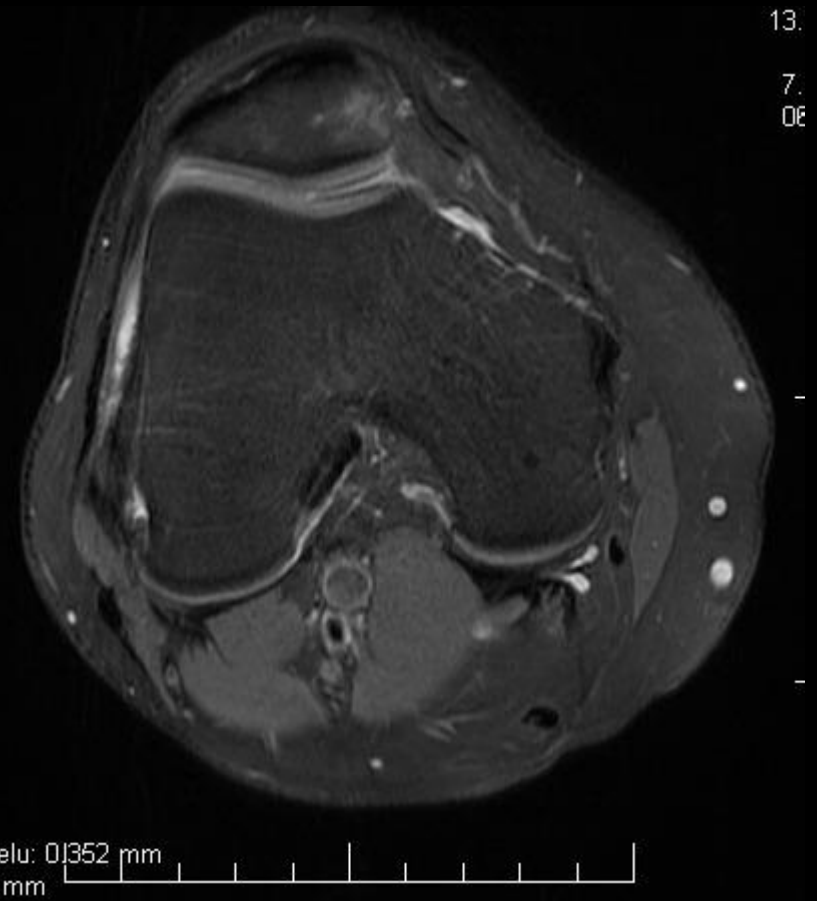
- Coil TR knee PA

Protokol:

- Ax PD FS
- Sag T1
- Cor GRE
- Cor STIR



Typ	Ax PD FS
Sekvence	FSE-XL
Rovina	Ax
Vrstva mm	4
FoV mm	18
Matrix Ph x Fr	224x384
Freq. Direction	R-L
PAT	1,75
TR ms / Slices	2980/26
TE ms	30
ETL	10
NEX	4
Čas	2:53
Různé	NPW, TRF, EDR



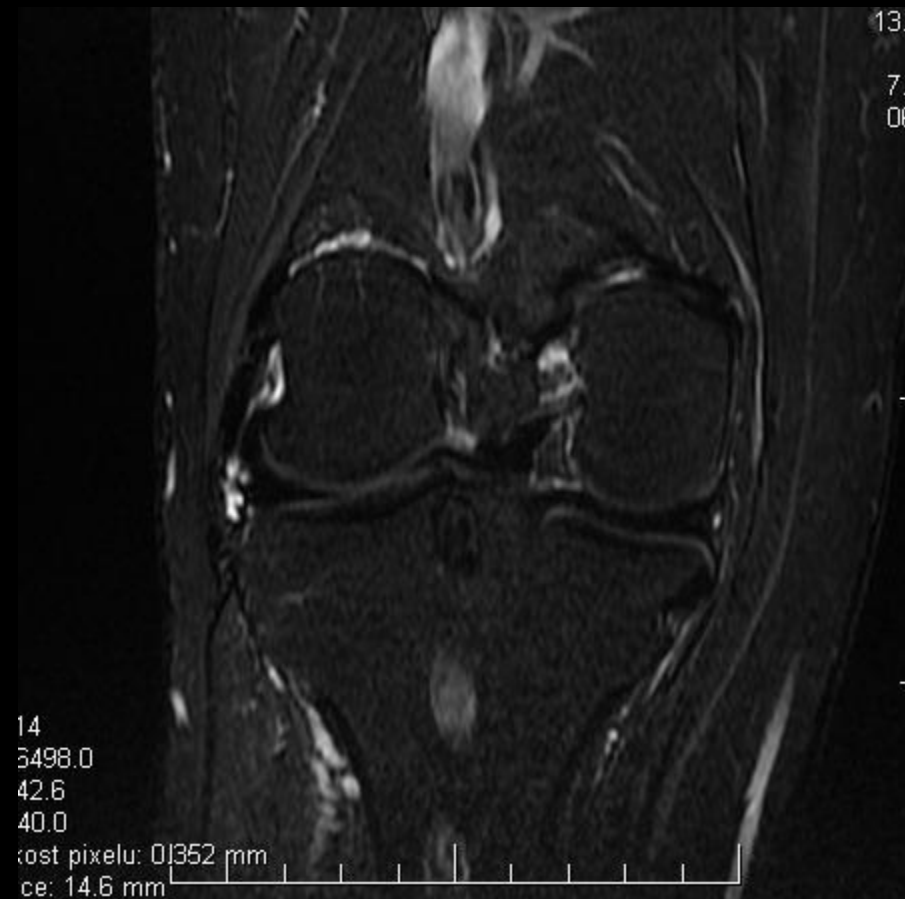
Typ	Sag T1
Sekvence	FSE-XL
Rovina	Sag
Vrstva mm	3
FoV mm	20
Matrix Ph x Fr	224x384
Freq. Direction	S-I
PAT	1,75
TR ms / Slices	496/27
TE ms	MinFull
ETL	5
NEX	4
Čas	2:47
Různé	NPW, TRF, EDR



Typ	Cor GRE
Sekvence	Fast GRE
Rovina	Cor
Vrstva mm	4
FoV mm	18
Matrix Ph x Fr	224x320
Freq. Direction	R-L
PAT	1,75
TR ms / Slices	525/26
TE ms	14,5
ETL	-
NEX	2
Čas	2:24
Různé	NPW, TRF, EDR FA 25



Typ	Cor STIR
Sekvence	FSE IR
Rovina	Cor
Vrstva mm	4
FoV mm	18
Matrix Ph x Fr	160x320
Freq. Direction	R-L
PAT	-
TR ms / Slices	6500/26
TE ms	14
ETL	14
NEX	2
Čas	2:24
Různé	NPW, TRF



Kyčel 1.5T

- Coil HD body

Protokol:

- Sag T2
- Cor T1
- Cor T2 FS
- Ax T1
- AxT2 FS



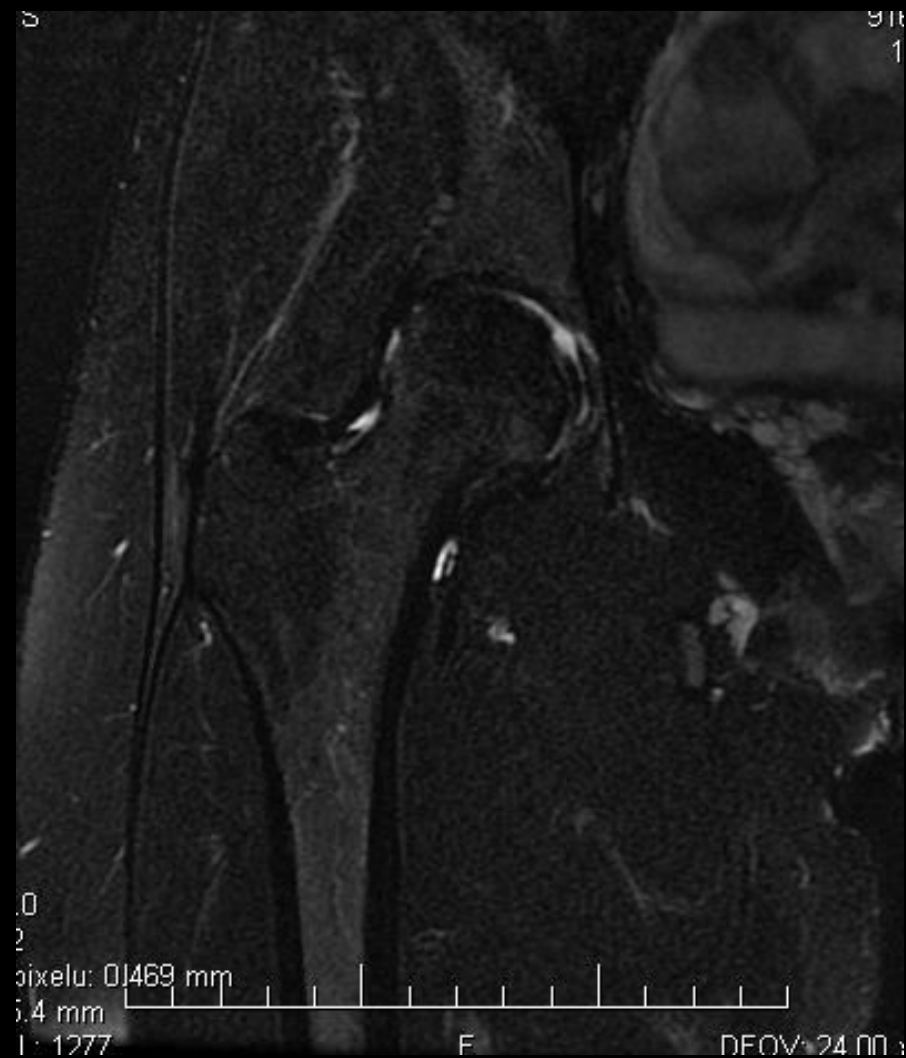
Typ	Sag T2
Sekvence	FRFSE-XL
Rovina	Sag
Vrstva mm	5
FoV mm	24
Matrix Ph x Fr	224x384
Freq. Direction	S-I
PAT	-
TR ms / Slices	4000/26
TE ms	110
ETL	17
NEX	3
Čas	2:56
Různé	NPW, TRF, EDR



Typ	Cor T1
Sekvence	FSE-XL
Rovina	Cor
Vrstva mm	4
FoV mm	24
Matrix Ph x Fr	224x256
Freq. Direction	S-I
PAT	-
TR ms / Slices	749/20
TE ms	MinFull
ETL	4
NEX	4
Čas	1:32
Různé	NPW, TRF, EDR



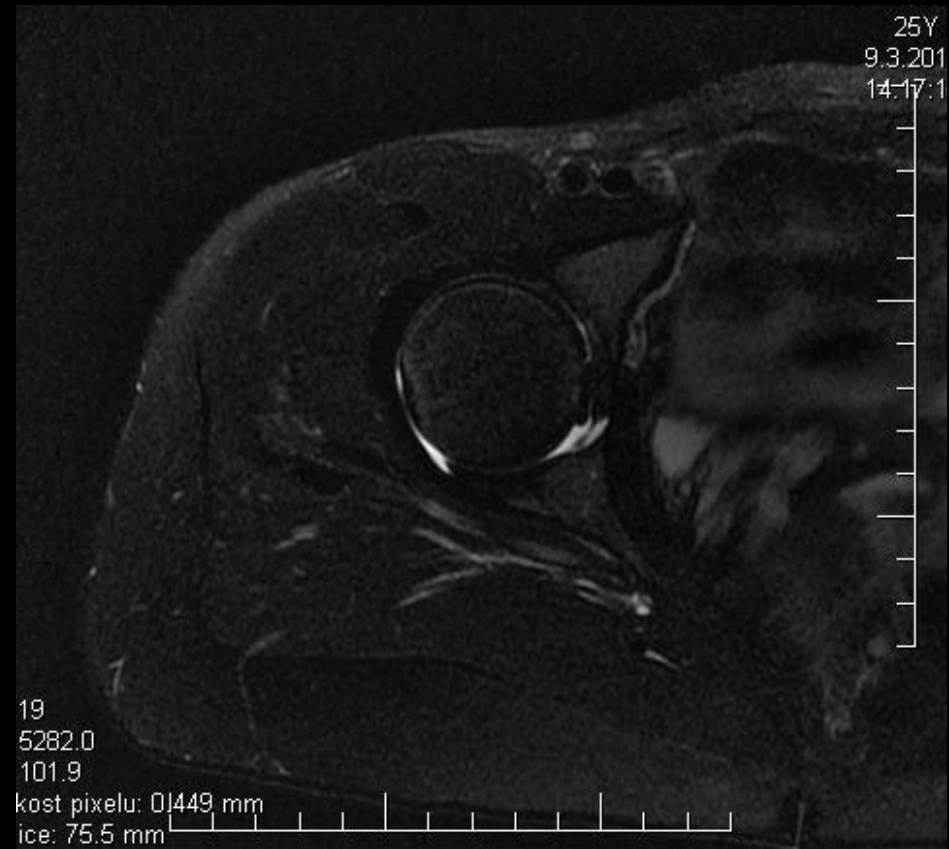
Typ	Cor T2 FS
Sekvence	FRFSE-XL
Rovina	Cor
Vrstva mm	4
FoV mm	24
Matrix Ph x Fr	224x256
Freq. Direction	S-I
PAT	2
TR ms / Slices	4611/20
TE ms	100
ETL	19
NEX	4
Čas	2:32
Různé	NPW, TRF, EDR



Typ	Ax T1
Sekvence	FSE-XL
Rovina	Ax
Vrstva mm	4
FoV mm	22
Matrix Ph x Fr	224x256
Freq. Direction	R-L
PAT	
TR ms / Slices	488/25
TE ms	MinFull
ETL	4
NEX	2
Čas	2:01
Různé	NPW, TRF, EDR



Typ	Ax T2 FS
Sekvence	FRFSE-XL
Rovina	Ax
Vrstva mm	4
FoV mm	22
Matrix Ph x Fr	256x320
Freq. Direction	R-L
PAT	2
TR ms / Slices	5022/25
TE ms	100
ETL	19
NEX	4
Čas	2:55
Různé	NPW, TRF, EDR



Rameno 1.5T

- Coil 8CH Shoulder

Protokol:

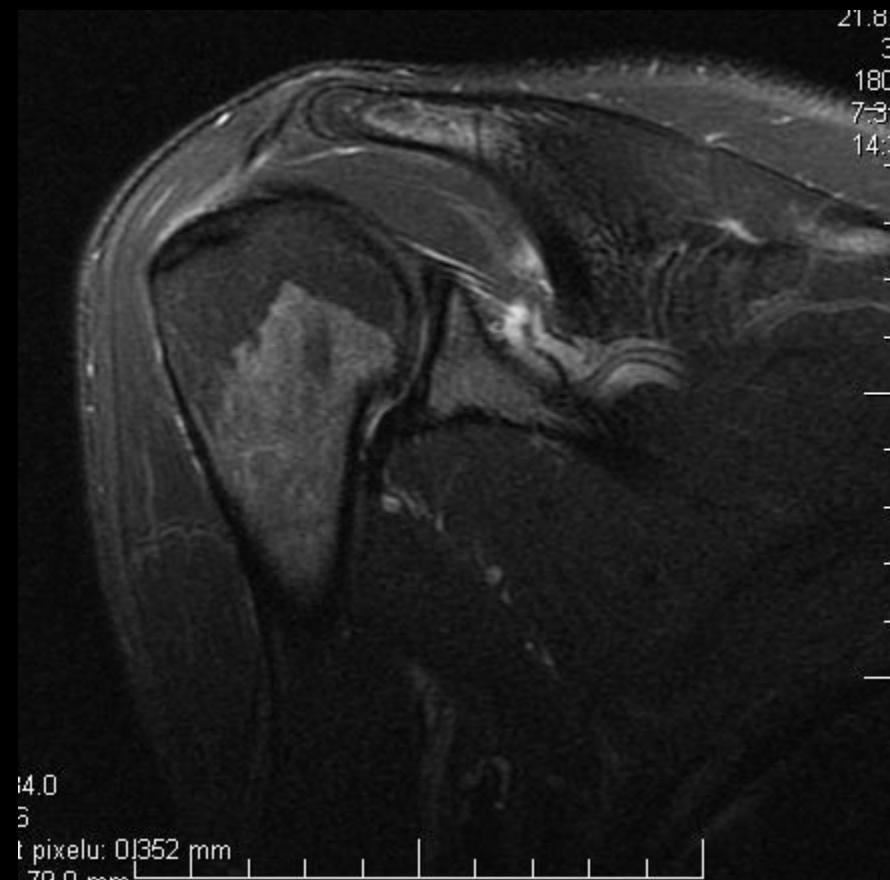
- Ax GRE T2*
- Cor T2 FS
- Cor PD
- Sag T2 FS



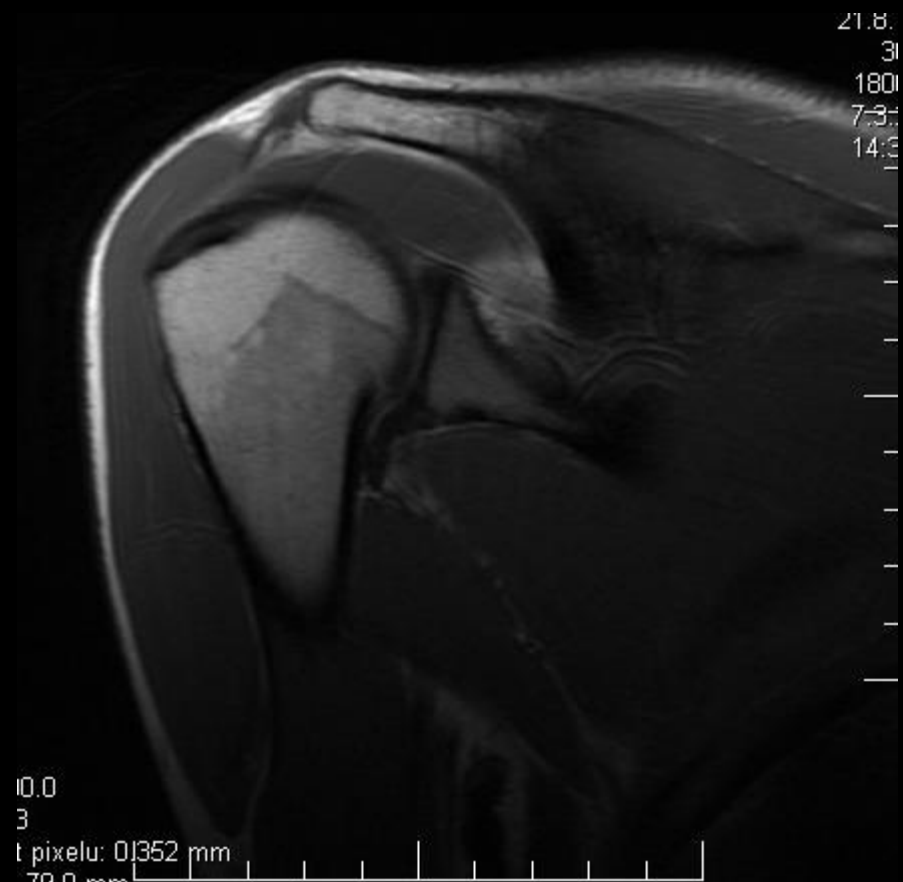
Typ	Ax GRE T2*
Sekvence	MERGE
Rovina	Ax
Vrstva mm	4
FoV mm	18
Matrix Ph x Fr	224x320
Freq. Direction	R-L
PAT	-
TR ms / Slices	557/19
TE ms	4,1
ETL	-
NEX	2
Čas	4:14
Různé	NPW, EDR



Typ	Cor T2 FS
Sekvence	FSE-XL
Rovina	Cor
Vrstva mm	4
FoV mm	18
Matrix Ph x Fr	224x320
Freq. Direction	S-I
PAT	-
TR ms / Slices	3384/17
TE ms	85
ETL	18
NEX	4
Čas	3:03
Různé	NPW, EDR



Typ	Cor PD
Sekvence	FRFSE-XL
Rovina	Cor
Vrstva mm	4
FoV mm	18
Matrix Ph x Fr	192x384
Freq. Direction	S-I
PAT	-
TR ms / Slices	2500/17
TE ms	30
ETL	9
NEX	3
Čas	2:50
Různé	NPW, TRF



Typ	Sag T2 FS
Sekvence	FSE-XL
Rovina	Sag
Vrstva mm	4
FoV mm	18
Matrix Ph x Fr	224x320
Freq. Direction	S-I
PAT	-
TR ms / Slices	3349/17
TE ms	85
ETL	18
NEX	4
Čas	3:01
Různé	NPW, TRF

